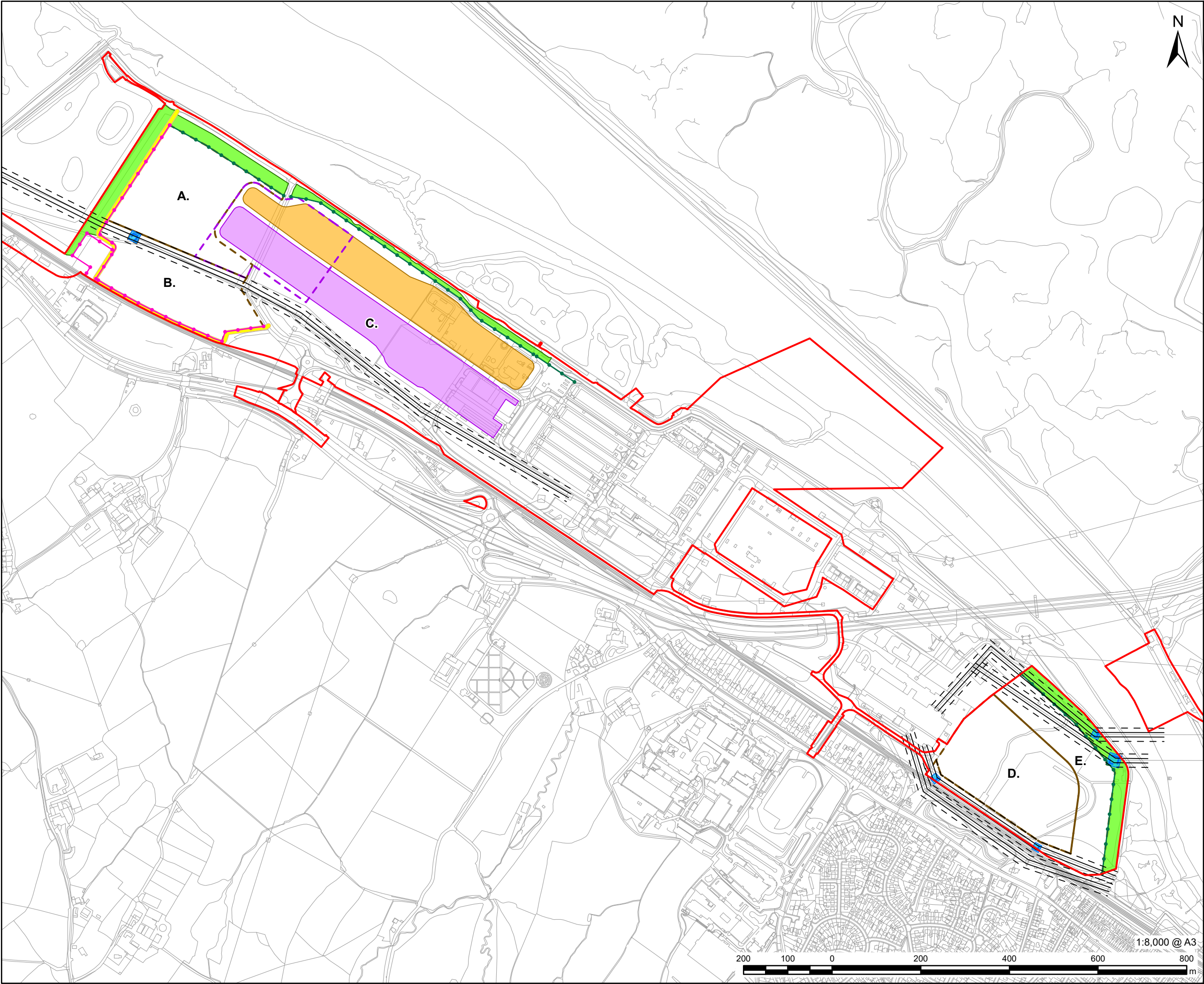


Connah's Quay Low Carbon Power

Environmental Statement Volume III
Figure 6-4: Indicative Construction Laydown Areas at
Statutory Consultation (October 2024)

Planning Inspectorate Reference: EN010166
Document Reference: EN010166/APP/6.3
Planning Act 2008 (as amended)
Infrastructure Planning (Applications: Prescribed Forms and Procedure) Regulations 2009 - Regulation 5(2)(a)
Revision 00

August 2025



This drawing has been prepared for the use of AECOM's client. It may not be used, modified, reproduced or relied upon by third parties, except as agreed by AECOM or as required by law. AECOM accepts no responsibility, and denies any liability whatsoever, to any party that uses or relies on this drawing without AECOM's express written consent. Do not scale this document. All measurements must be obtained from the stated dimensions.

PROJECT
Connah's Quay Low Carbon Power

CONSULTANT
AECOM Limited
The Colmore Building
Colmore Circus, Queensway
Birmingham, B4 6AT
www.aecom.com

- LEGEND**
- Indicative Site Boundary at Statutory Consultation (October 2024)
 - Existing Overhead Line
 - Existing Overhead Line - 10m Buffer
 - Acoustic Barrier
 - Fence Hoarding
 - Deeside Naturalists' Society Temporary Construction Access
 - Transmission Tower
 - Transmission Tower - 5m Buffer
 - Construction Laydown Area
 - Ecological Safeguard Zone
 - Cooling Tower Construction Area
 - Construction Phase 1 Combined Cycle Gas Turbine (CCGT) Train
 - Construction Phase 2 Combined Cycle Gas Turbine (CCGT) Train

NOTES
© Crown Copyright 2025. All rights reserved.
Ordnance Survey Licence AC0000808122.

ISSUE PURPOSE
Environmental Statement

DATE
July 2025

PROJECT NUMBER
60717119

FIGURE TITLE
Indicative Construction Laydown Areas at Statutory Consultation (October 2024)

FIGURE NUMBER
Figure 6-4